

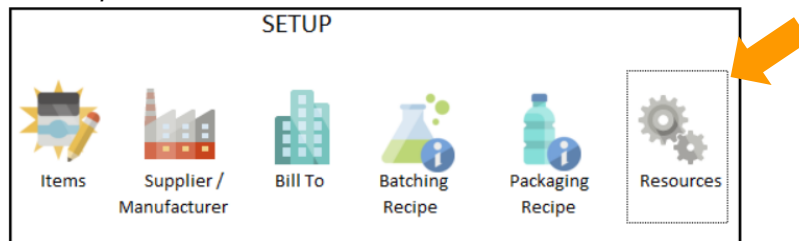
Manual Scale Creation and Configuration

This document provides an overview on how to create manual scales and how to configure them within Mar-Kov.

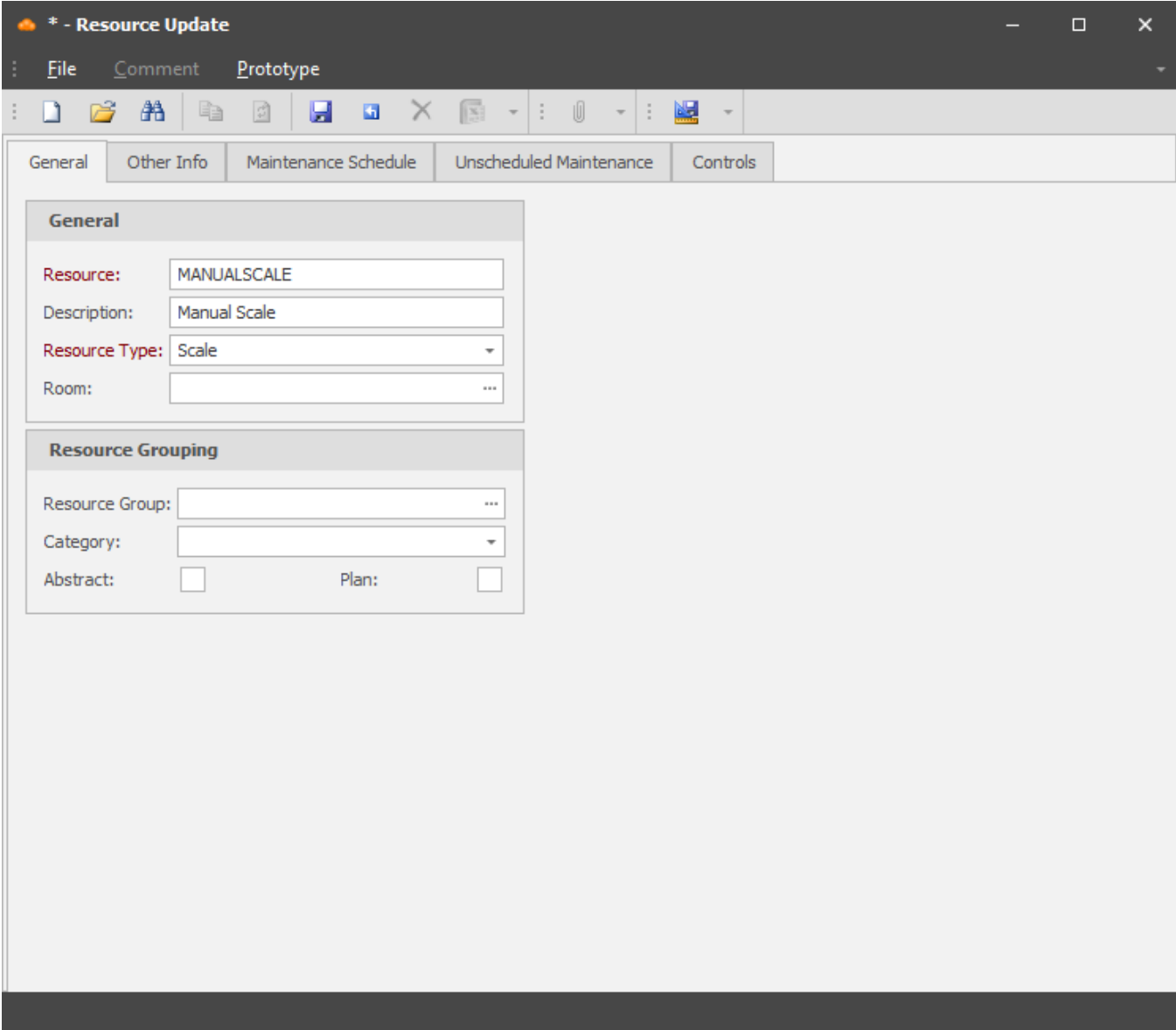
For more information on how to create Resources, please see the How to Create a Resource work instruction.

Scale Creation

To set up a Resource, select the **Resources** icon from the display menu or go to *Master Tables >> Miscellaneous >> Resource Update*.



Select New. Enter a **resource code**, a **description**, and select Scale as a **resource type**

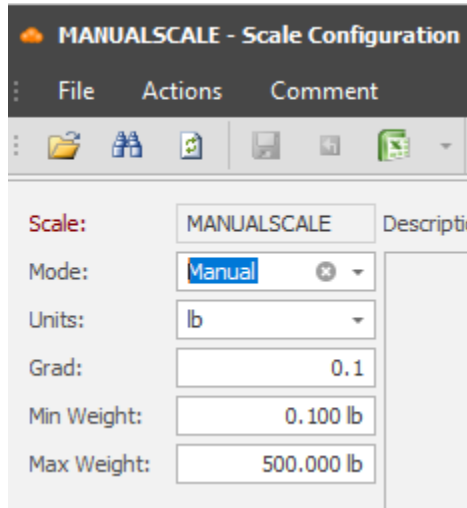


You may save your progress when complete

Scale Configuration

To configure your scale, go to *Master Tables >> Miscellaneous >> Scale Configuration*

Select Find, and select the scale you created



Ensure that the mode is Manual. You may enter the scale **units**, the **Min Weight**, and **Max Weight** as shown.

The **Grad** refers to the smallest increment that the scale can display.

You may select Save to complete the configuration.